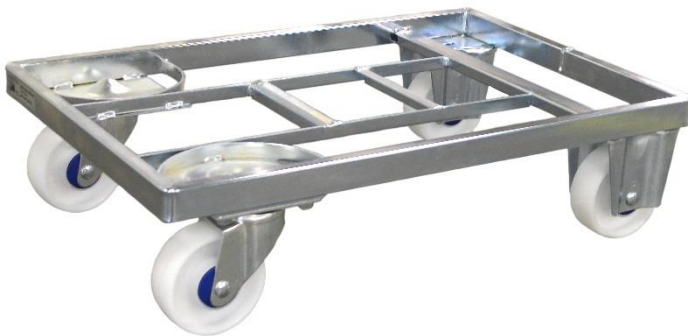


Lean Dolly Type I and II



Product description

The Lean Dolly has been designed to carry SLC's and component trays widely used within the automotive industry. It is designed to be compatible with both your milkrun and automated systems.

For optimised external transport and warehousing the Lean dolly can be used together with the Lean adaptor pallet.

Benefits

- Improve work flow
- Reduce handling costs
- Enable reduction of stock level
- Reduce need for floor space
- Improve ergonomics
- Fast and safe truck loading
- Optimize vehicle fill





Lean Dolly Type I and II

Lean Dolly - ¼ Pallet

- External dimensions 600 x 400 x 157 mm
- Tare weight 6,3 kg
- Wheel size 100 mm wheels
- Wheel type 2 fixed & 2 swivel (Type I)
..... 4 swivel (Type II)
- Wheel material CPD, rubber or PU
- Working capacity:
 - CPD – standard and ESD 250 kg
 - Rubber/PU – standard 250 kg
 - Polyamide – ESD 250 kg

K.Hartwall wheels are equipped with high quality ball bearings and hub caps for high performance and wheel protection.

Surface treatment: Blue zinc plated acc. to EN-ISO2081

Compatible with the following Lean Adaptor Pallets:

- Next Generation (DOS1696 & DOS1725)
- Type III (DOS1405)

Safe stacking up to 15 pieces 1950 mm



Options

- Total brake on 1 or 2 swivel wheels
- RFID compatibility

Also available in ISO- and US-dimensions:

- 600 x 500 mm
- 24" x 15" (609 x 381 mm)
- 24" x 22.5" (609 x 571 mm)

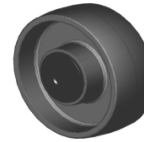
Standard wheels



Compound wheel



Rubber wheel



ESD hard plastic wheel and non-marking ESD hard plastic wheel



Polyurethane wheel or polyurethane ESD wheel

Designed to carry SLC's and trays

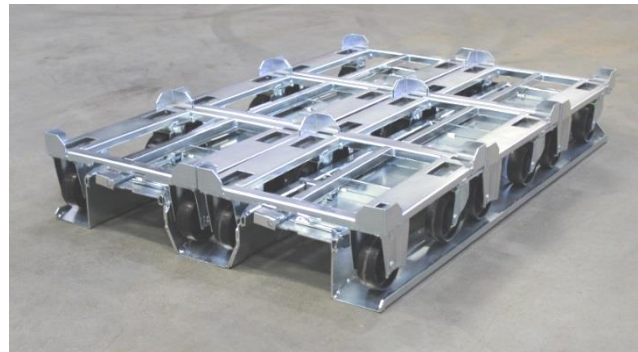
- 1 stack of 600 x 400 mm
- 2 stacks of 300 x 400 mm
- 4 stacks of 300 x 200 mm

Accessories

- Ergonomic handle
- Strapping device
- Oil dripping pan



Lean Dolly Type III



Product description

The Lean Dolly has been designed to carry SLC's and component trays widely used within the automotive industry. It is designed to be compatible with both your milkrun and automated systems.

For optimised external transport and warehousing the Lean dolly can be used together with the Lean adaptor pallet.

Benefits

- Improve work flow
- Reduce handling costs
- Enable reduction of stock level
- Reduce need for floor space
- Improve ergonomics
- Fast and safe truck loading
- Optimize vehicle fill





Lean Dolly Type III

Lean Dolly - 400x 400 mm

- External dimensions 400 x 400 x 169,5 mm
- Tare weight 6 kg
- Wheel size 100 mm wheels
- Wheel type 2 fixed & 2 swivel
- Wheel material CPD, rubber or PU
- Working capacity:
 - CPD – standard and ESD 250 kg
 - Rubber/PU – standard 250 kg
 - Polyamide – ESD 250 kg

K.Hartwall wheels are equipped with high quality ball bearings and hub caps for high performance and wheel protection.

Surface treatment: Blue zinc plated acc. to EN-ISO2081

Compatible with the following Lean Adaptor Pallets:

- Next Generation (DOS1696 & DOS1725)
- Type III (DOS1405)

Safe stacking up to 8 pieces 1200 mm



Options

- Total brake on 1 or 2 swivel wheels
- RFID compatibility

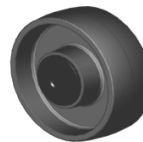
Standard wheels



Compound wheel



Rubber wheel



ESD hard plastic wheel and non-marking ESD hard plastic wheel



Polyurethane wheel or polyurethane ESD wheel

Designed to carry SLC's and trays

- 1 stack of 400 x 400 mm

Accessories

- Strapping device
- Oil dripping pan

Lean Dolly Type IV

With low frame and side supports



Product description

The Lean Dolly has been designed to carry SLC's and component trays widely used within the automotive industry. It is designed to be compatible with both your milkrun and automated systems.

For optimised external transport and warehousing the Lean dolly can be used together with the Lean adaptor pallet.

Benefits

- Improve work flow
- Reduce handling costs
- Enable reduction of stock level
- Reduce need for floor space
- Improve ergonomics
- Fast and safe truck loading
- Optimize vehicle fill





Lean Dolly Type IV

Lean Dolly - ¼ Pallet

- External dimensions 604 x 404 x 168 mm
- Tare weight 6,7 kg
- Wheel size 100 mm wheels
- Wheel type 2 fixed & 2 swivel
- Wheel material CPD, rubber or PU
- Working capacity:
 - CPD – standard and ESD 250 kg
 - Rubber/PU – standard 250 kg
 - Polyamide – ESD..... 250 kg

K.Hartwall wheels are equipped with high quality ball bearings and hub caps for high performance and wheel protection.

Surface treatment: Blue zinc plated acc. to EN-ISO2081

Compatible with the following Lean Adaptor Pallets:

- Next Generation (DOS1696 & DOS1725)
- Type III (DOS1405)

Safe stacking up to 15 pieces 1960 mm



Options

- Total brake on 1 or 2 swivel wheels
- RFID compatibility

Also available in ISO-dimensions:

- 600 x 500 mm

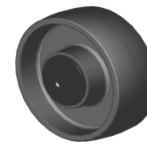
Standard wheels



Compound wheel



Rubber wheel



ESD hard plastic wheel and non-marking ESD hard plastic wheel



Polyurethane wheel or polyurethane ESD wheel

Designed to carry SLC's and trays

- 1 stack of 600 x 400 mm
- 2 stacks of 300 x 400 mm
- 4 stacks of 300 x 200 mm

Accessories

- Ergonomic handle
- Strapping device
- Oil dripping pan



Lean Dolly Type V

With 4 swivel wheels and side supports



Product description

The Lean Dolly has been designed to carry SLC's and component trays widely used within the automotive industry. It is designed to be compatible with both your milkrun and automated systems.

For optimised external transport and warehousing the Lean dolly can be used together with the Lean Adaptor Pallet.

Benefits

- Improve work flow
- Reduce handling costs
- Enable reduction of stock level
- Reduce need for floor space
- Improve ergonomics
- Fast and safe truck loading
- Optimize vehicle fill





Lean Dolly Type V

Lean Dolly - ¼ Pallet

- External dimensions 604 x 404 x 169,5 mm
- Tare weight 7,6 kg
- Wheel size 100 mm wheels
- Wheel type 4 swivel
- Wheel material CPD, rubber or PU
- Working capacity:
 - CPD – standard and ESD 250 kg
 - Rubber/PU – standard 250 kg
 - Polyamide – ESD 250 kg

K.Hartwall wheels are equipped with high quality ball bearings and hub caps for high performance and wheel protection.

Surface treatment: Blue zinc plated acc. to EN-ISO2081

Compatible with the following Lean Adaptor Pallets:

- Next Generation (DOS1696 & DOS1725)
- Type III (DOS1405)

Safe stacking up to 15 pieces 1955 mm



Options

- Total brake on 1 or 2 swivel wheels
- RFID compatibility

Also available in ISO-dimensions:

- 600 x 500 mm

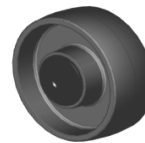
Standard wheels



Compound wheel



Rubber wheel



ESD hard plastic wheel and non-marking ESD hard plastic wheel



Polyurethane wheel or polyurethane ESD wheel

Designed to carry SLC's and trays

- 1 stack of 600 x 400 mm
- 2 stacks of 300 x 400 mm
- 4 stacks of 300 x 200 mm

Accessories

- Ergonomic handle
- Strapping device
- Oil dripping pan



Lean Dolly Type VII



Product description

The Lean Dolly has been designed to carry SLC's and component trays widely used within the automotive industry. It is designed to be compatible with both your milkrun and automated systems.

For optimised external transport and warehousing the Lean dolly can be used together with the Lean adaptor pallet.

Benefits

- Improve work flow
- Reduce handling costs
- Enable reduction of stock level
- Reduce need for floor space
- Improve ergonomics
- Fast and safe truck loading
- Optimize vehicle fill





Lean Dolly Type VII

Lean Dolly - ¼ Pallet with towing arm

- External dimensions 604 x 404 x 170 (382) mm
- Tare weight 7,8 kg
- Wheel size 100 mm wheels
- Wheel type 2 fixed & 2 swivel
- Wheel material CPD, rubber or PU
- Working capacity:
 - CPD – standard and ESD 250 kg
 - Rubber/PU – standard 250 kg
 - Polyamide – ESD 250 kg

K.Hartwall wheels are equipped with high quality ball bearings and hub caps for high performance and wheel protection.

Surface treatment: Blue zinc plated acc. to EN-ISO2081

Compatible with the following Lean Adaptor Pallets:

- Next Generation (DOS1696 & DOS1725)
- Type III (DOS1405)

Safe stacking up to 15 pieces 1950 mm
(With towing arm 2171 mm)



Options

- Total brake on 1 or 2 swivel wheels
- RFID compatibility

Also available in ISO-dimensions:

- 600 x 500 mm

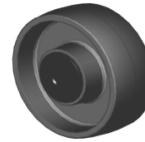
Standard wheels



Compound wheel



Rubber wheel



ESD hard plastic wheel and non-marking ESD hard plastic wheel



Polyurethane wheel or polyurethane ESD wheel

Designed to carry SLC's and trays

- 1 stack of 600 x 400 mm
- 2 stacks of 300 x 400 mm
- 4 stacks of 300 x 200 mm

Accessories

- Strapping device
- Oil dripping pan

Types

VIIA with side supports

VIIIB without side supports

Lean Dolly 600 x 800 mm



Product description

The Lean Dolly has been designed to carry SLC's and component trays widely used within the automotive industry. It is designed to be compatible with both your milkrun and automated systems.

For optimised external transport and warehousing the Lean dolly can be used together with the Lean adaptor pallet.

Benefits

- Improve work flow
- Reduce handling costs
- Enable reduction of stock level
- Reduce need for floor space
- Improve ergonomics
- Fast and safe truck loading
- Optimize vehicle fill



Lean Dolly 600 x 800 mm

Lean Dolly - ½ Pallet

External dimensions 600 x 806 x 158 (495) mm

Tare weight 13,6 kg

Wheel size 100 mm wheels

Wheel type 2 fixed & 3 swivel

Wheel material CPD, rubber or PU

Working capacity:

- CPD – standard and ESD 500 kg
- Rubber/PU – standard 500 kg
- Polyamide – ESD 500 kg

K.Hartwall wheels are equipped with high quality ball bearings and hub caps for high performance and wheel protection.

Surface treatment: Blue zinc plated acc. to EN-ISO2081

Compatible with the following Lean Adaptor Pallets:

- Next Generation (DOS1696 & DOS1725)
- Type III (DOS1405)

Safe stacking up to 15 pieces 1950 mm
(With towing arm 2,3 m)



Options

- Total brake on 1 or 2 swivel wheels
- RFID compatibility

Also available in ISO-dimensions:

- 600 x 1000 mm

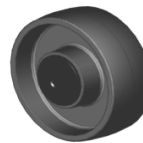
Standard wheels



Compound wheel



Rubber wheel



ESD hard plastic wheel and non-marking ESD hard plastic wheel



Polyurethane wheel or polyurethane ESD wheel

Designed to carry SLC's and trays

- 2 stack of 600 x 400 mm
- 4 stacks of 300 x 400 mm

Accessories

- Strapping device